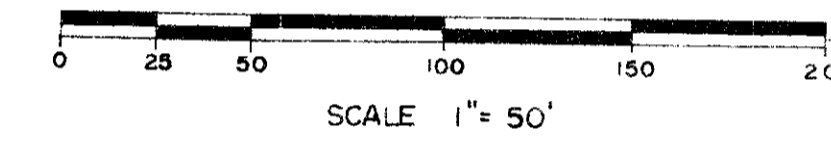
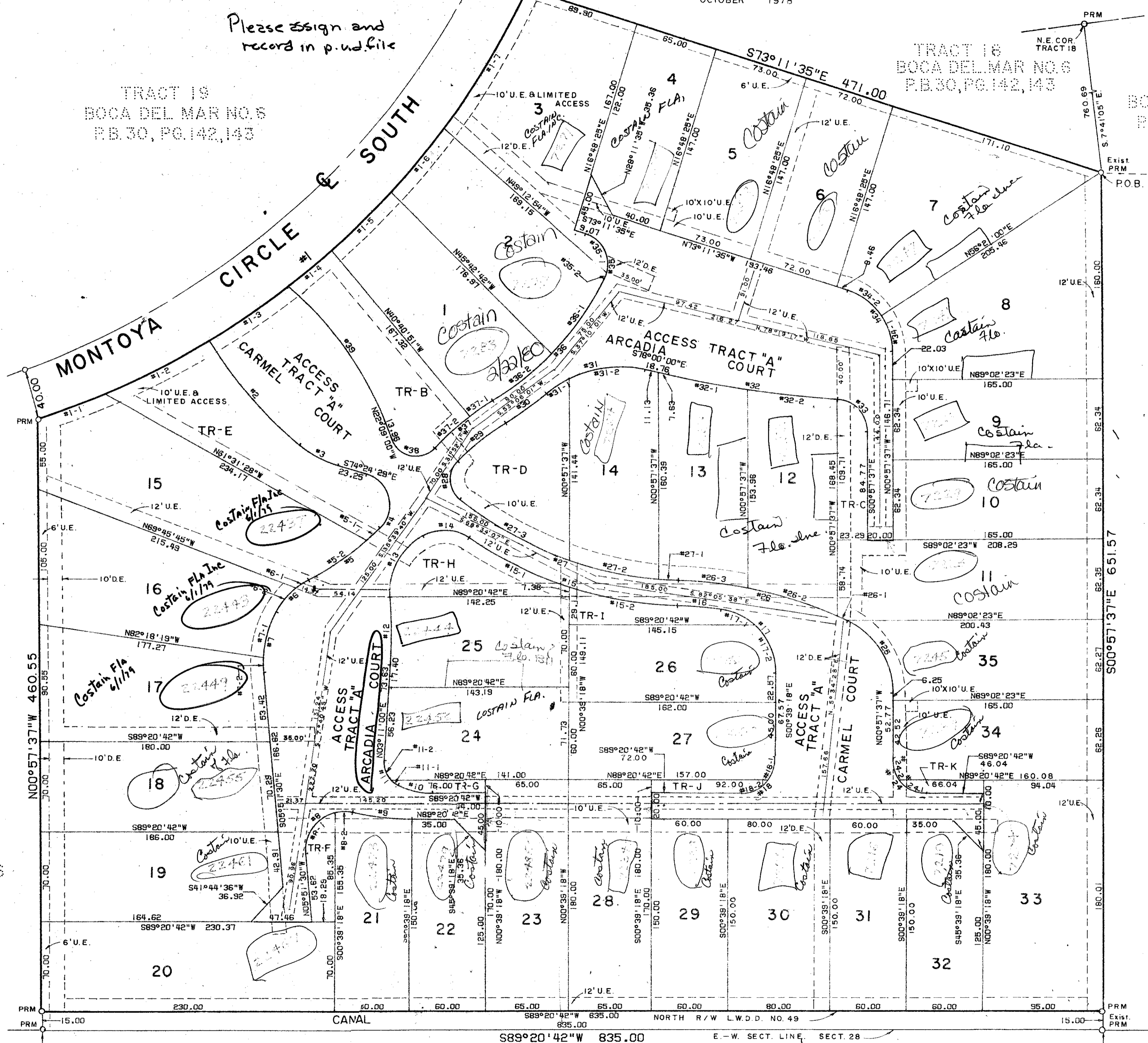


TABLE OF ARCS

NUMBER	RADIUS	ARC	DELTA	TAN	CHORD	CHORD BEARING
1	643.11	522.63	046°33'44"	276.72	508.37	N46°31'12.0"E
1-1		56.00	00°59'21"	28.02	55.98	N89°18'23.5"E
1-2		91.67	00°10'01"	45.91	91.59	N89°43'42.5"E
1-3		74.74	00°39'31"	37.41	74.70	N89°18'56.5"E
1-4		44.00	00°55'12"	22.01	43.99	N90°01'35.0"E
1-5		65.00	00°47'07"	32.53	64.97	N89°10'15.5"E
1-6		65.00	00°47'26"	32.53	64.97	N89°22'48.0"E
1-7		126.22	01°14'44"	63.32	126.02	N30°51'42.0"E
2	327.00	107.46	01°49'58"	54.23	107.00	S41°41'22.5"E
3	85.00	34.57	02°18'07"	17.53	34.33	S62°45'25.5"E
4	25.00	52.04	11°39'16"04"	42.67	43.14	S14°46'27.0"E
5	228.00	69.54	01°47'28"27"	35.04	69.27	S53°35'48.5"W
5-1		14.64	00°34'04"00"	7.32	14.63	S89°41'55.0"W
5-2		54.30	01°34'47"41"	27.58	54.17	S55°26'06.5"W
6	60.00	36.07	03°26'42"	18.60	35.53	S45°06'41.0"W
6-1		12.00	01°12'7"33"	6.02	11.98	S66°36'15.5"W
6-2		24.07	02°59'09"	12.20	23.91	S39°22'54.5"W
7	83.00	48.89	03°34'44"50"	25.18	48.18	S11°00'55.0"W
7-1		37.28	00°43'53"	18.36	36.96	S19°01'23.5"W
7-2		11.61	00°00'57"	5.82	11.60	S91°51'01.5"E
8	30.00	56.71	10°18'21"21"	41.52	48.64	N48°11'40.5"E
8-1		43.06	08°14'45"	26.19	39.46	N35°15'52.5"E
8-2		13.65	06°03'36"	6.94	13.53	N85°25'03.0"E
9	205.00	46.88	01°30'09"	23.54	46.78	S84°06'13.5"E
10	63.00	28.01	03°34'50"	14.26	27.75	N77°16'58.5"W
11	20.00	23.42	06°47'26"	13.26	22.10	N39°22'48.0"E
11-1		6.18	01°44'15"	3.11	6.15	N55°03'41.5"E
11-2		17.24	04°23'44"	9.20	16.71	N21°30'52.0"W
12	370.00	52.69	00°09'34"	26.39	52.65	N00°53'47.0"E
13	50.00	57.25	06°35'58"	32.22	54.17	N27°49'25.0"E
14	35.00	38.29	06°24'10"	21.32	36.41	S88°02'05.0"E
15	310.00	176.25	03°23'29"	90.04	172.93	S72°53'19.5"E
15-1		89.16	01°28'43"	44.89	88.86	S64°55'55.5"E
15-2		66.09	01°54'46"	43.33	65.82	S81°07'40.0"E
16	315.00	34.29	00°14'12"	17.16	34.27	S85°51'57.0"E
17	50.00	71.73	08°11'33"	43.61	65.73	S41°45'04.5"E
17-1		29.43	03°34'32"	15.16	29.01	S65°59'05.0"E
17-2		42.30	04°28'01"	22.51	41.05	S24°53'18.5"E
18	25.00	39.27	90°00'00"	25.00	35.36	S44°20'42"0"W
18-1		16.09	3°52'09"	8.33	15.81	S17°46'46"0"W
18-2		23.18	53°07'51"	12.90	22.36	S62°46'46"0"W
24	25.00	39.14	89°41'41"	24.87	35.26	N45°48'27"0"W
24-1		23.19	53°08'00"	12.50	22.36	N19°14'27"0"W
24-2		15.95	36°33'41"	8.26	15.68	N64°05'18"0"W
25	62.00	69.93	64°37'28"	39.21	66.28	N33°16'21.0"W
26	335.00	131.40	02°29'58"	69.68	136.44	N77°20'04.0"W
26-1		8.65	00°18'48"	4.33	8.65	N85°19'28.0"W
26-2		73.59	01°29'08"	36.94	73.44	N73°21'25.0"W
26-3		55.16	00°26'04"	27.64	55.10	N84°22'01.0"W
27	230.00	186.79	03°54'14"	96.76	183.98	N70°37'56.0"W
27-1		15.29	00°31'18"	7.65	15.29	N87°34'24.0"W
27-2		71.75	01°41'02"	36.06	71.56	N78°58'31.0"W
27-3		99.75	01°42'28"	50.37	99.26	N82°02'03.0"W
28	20.00	33.57	06°09'31"	22.27	33.76	N04°06'03.5"W
29	190.00	48.27	01°43'22"	24.27	48.14	N51°15'23.0"E
30	250.00	39.31	00°00'29"	19.69	39.26	N84°01'49.5"E
31	90.00	82.43	05°28'25"	44.36	79.57	N75°45'47.5"E
31-1		21.77	01°34'13"	10.96	21.72	N56°27'21.5"E
31-2		60.66	03°36'52"	31.53	59.51	N82°41'34.0"E
32	850.00	134.16	00°02'36"	67.22	134.02	S82°31'18.0"E
32-1		63.72	00°47'42"	31.87	63.70	S80°08'51.0"E
32-2		70.44	00°44'54"	35.24	70.42	S84°40'09.0"E
33	25.00	37.56	08°04'59"	23.35	34.13	S44°00'06.5"E
34	50.00	63.04	07°13'58"	36.48	58.94	N37°04'36.0"W
34-1		28.53	03°41'23"	14.66	28.14	N17°18'18.5"W
34-2		34.51	03°32'35"	17.37	33.63	N51°11'09.5"W
35	25.00	43.26	09°09'12"	29.35	38.06	S23°36'59.0"E
35-1		38.26	08°41'39"	24.01	34.64	S29°20'45.5"E
35-2		5.00	01°27'33"	2.51	4.99	S20°13'50.5"W
36	230.00	130.76	03°34'27"	67.20	129.01	S42°13'50.5"W
36-1		71.76	01°52'35"	36.17	71.47	S34°53'55.0"W
36-2		58.65	01°42'11"	29.36	58.84	S51°11'09.5"W
37	210.00	58.65	01°00'09"	29.52	58.46	S50°31'59.5"W
37-1		21.65	00°54'27"	10.84	21.64	S55°34'50.5"W
37-2		37.00	01°05'42"	18.55	36.95	S47°34'46.0"W
38	20.00	40.25	11°59'05"	31.59	33.80	N78°48'32.5"W
39	265.00	131.24	02°22'31"	66.99	129.90	N36°20'15.5"W

LOT	SQ.FT.
L-1	12,551
L-2	12,279
L-3	16,256
L-4	9,242
L-5	10,731
L-6	10,584
L-7	16,401
L-8	17,753
L-9	10,286
L-10	10,286
L-11	12,371
L-12	11,151
L-13	10,903
L-14	10,981
L-15	17,320
L-16	15,348
L-17	13,743
L-18	12,810
L-19	12,857
L-20	16,113
L-21	9,161
L-22	9,587
L-23	11,700
L-24	10,409
L-25	9,325
L-26	9,326
L-27	9,696
L-28	11,700
L-29	9,000
L-30	15,000
L-31	9,000
L-32	8,688
L-33	17,019
L-34	10,183
L-35	10,835
TR-B	7,780
TR-C	2,425
TR-D	8,081
TR-E	10,845
TR-F	1,676
TR-G	863
TR-H	4,680
TR-I	2,365
TR-J	863
TR-K	600
CANAL	12,525
TRACT "A"	89,584
TOTAL	560,775

P.U.D.
THORNHILL MEWS
 A PLAT OF A PORTION OF SECT. 28, TWP. 47S, RGE. 42 E.
 AND ALSO BEING A REPLAT OF A PORTION OF TRACT 18, BOCA DEL MAR PLAT, NO. 6, AS RECORDED IN
 PLAT BOOK 30, PAGES 142 & 143 OF THE PUBLIC RECORDS OF PALM BEACH COUNTY, FLORIDA
PALM BEACH COUNTY, FLORIDA
JOHN A. GRANT, JR., INC.
CONSULTING ENGINEERS & LAND SURVEYORS
 BOCA RATON, FLORIDA
 OCTOBER 1978



AREA OF LOTS 1 - 35	9.612 AC.
AREA OF TRACT "A" (ACCESS)	2.057 AC.
AREA OF OPEN TRACTS "B" - "K"	0.918 AC.
AREA OF CANAL R/W	0.287 AC.
TOTAL AREA THIS PLAT	12.874 AC.
TOTAL NO. UNITS PROPOSED	35
DENSITY, THIS PLAT	2.72 UNITS/AC.
LAND USE	SINGLE FAMILY

This instrument was prepared by
 John A. Grant, Jr., John A. Grant, Jr., Inc.
 3333 North Federal Highway, Boca Raton, Fla.

0205-352

NOTES
 Bearings shown hereon are based on bearings recorded by BOCA DEL MAR No. 7 in Plat Book 30, Pages 210 and 217, Public Records of Palm Beach County, Florida.
 There will be building, tree, or shrub placed on easements.
 P.R.M. Indicates Permanent Reference Monument
 P.C.P. Indicates Permanent Control Point
 U.E. Indicates Utility Easement
 D.E. Indicates Drainage Easement
 L.E. Indicates Landscape Easement
 T.R. Indicates Open Area Tract

BoCA DEL MAR No. 6
 P.B. 30 PG. 142, 143
Thornhill Mews - Boca Del Mar PUD